

# BUTTERFLIES

*of the Great Ocean Road*



THREATENED  
SPECIES  
CONSERVANCY

# THREATENED SPECIES CONSERVANCY



# ACKNOWLEDGEMENTS

*The authors acknowledge and pay respects to the Gadubanud people, on whose land this field guide was created. We acknowledge the ongoing connections to Country that the traditional custodians of Australia have, including the butterflies this field guide features. We pay our respects to their Elders past, present, and emerging.*

Production of this book was made possible by funding through Coastcare Victoria's community grants program. We thank contributing partners, volunteers and interns who made this work possible. In particular we thank Ruby Martin, Siahn Fraser, Georgie Custance and Bianca Zhong Zhou for their contributions. We also thank every person who took a photo of a butterfly and uploaded it to iNaturalist as this then allowed us to be able to source and utilise these wonderful images and create this field guide. See the inside back cover for specific image credits.



Published by the Threatened Species Conservancy

**National Library of Australia Cataloguing-in-publication data:**

Butterflies of the Great Ocean Road

First edition published June 2024

ISBN: 978-0-646-70692-4

Subjects: Natural history

Editor: Abi Smith

This book has been proudly printed with 100% recycled post-consumer waste and carbon neutral paper.

# CONTENTS

## *Introduction*

- 1 *About this Guide*
- 2 *The Great Ocean Road*
- 3 *What is a butterfly*
- 5 *Lifecycle*
- 6 *Flight time calendar*
- 7 *Courtship*
- 8 *Building a Butterfly Garden*  
*Tips to Observing Butterflies*

## *Butterflies*

- 9
- 11 *Swallowtails (Papilionidae)*
- 14 *Whites and Yellows (Pieridae)*
- 21 *Nymphs and their allies (Nymphalidae)*
- 26 *Skippers (Hesperiidae)*  
*Blues and Coppers (Lycaenidae)*

# ABOUT THIS GUIDE

Butterflies are more than just beautiful—they are excellent bioindicators. Because they are highly sensitive to changes in climate and land use, the presence (or absence) of different butterfly species gives us valuable clues about the health of our environment. Everyone can play a role in butterfly conservation. By getting outdoors, observing, photographing, and recording butterflies, you help build vital knowledge about where species live and how they are coping with environmental change.

This field guide was created as part of the Threatened Species Conservancy's Otway Coastal Butterfly Project, an initiative encouraging people to discover and learn about the butterflies that call the Great Ocean Road home. In the project's first year, we set out to fill gaps in butterfly distribution knowledge across the Otways and discovered six species never before documented in the region. These ongoing community observations are helping to build a clearer picture of butterfly populations along the coast.

The butterfly species featured here are based on predictions from two leading references: *Butterflies of Australia* by Michael Braby and *A Field Guide to Butterflies of Australia* by Garry Sankowsky. Some species included have not yet been officially recorded in the region, but their presence is expected.



# THE GREAT OCEAN ROAD

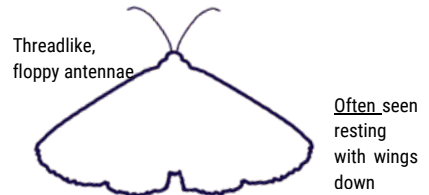
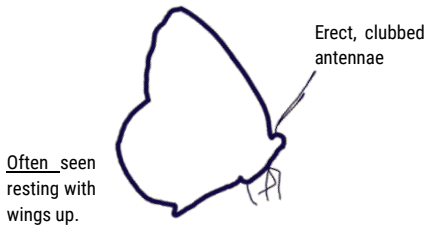
The Great Ocean Road stretches for 243 kilometres along Victoria's south-west coast, winding between Torquay and Allansford. The road follows the edge of the Southern Ocean, cutting through a diverse landscape of coastal heathlands, tall eucalypt forests, and the temperate rainforests of the Otway Ranges.

This variety of ecosystems makes the region especially important for butterflies. Open coastal heaths, rich in wildflowers, support sun-loving species that depend on nectar plants such as banksias, wattles and peas. Sheltered gullies and rainforests provide cool, moist refuges for shade-adapted butterflies, while inland grasslands and woodlands host species that rely on native grasses as caterpillar food plants.

The Great Ocean Road also sits at a biogeographical crossroads, where coastal and inland environments overlap. This creates a hotspot for butterfly diversity, from common and widespread species to rarer specialists with highly localised needs. Migratory butterflies such as the Australian Painted Lady also use the coastal corridor as part of their seasonal movements. Together, these qualities make the Great Ocean Road not only a spectacular landscape for people, but also a significant refuge for butterflies and a valuable place to observe their variety.



# WHAT IS A BUTTERFLY



Butterflies and moths both belong to the order Lepidoptera (“scale wings” in Greek), named for the tiny scales covering their wings and bodies that create their colours and patterns. Closely related, they can usually be told apart by these features:

- Antennae – Butterflies have slender, clubbed tips; moths have threadlike or feathery antennae without clubs.
- Resting posture – Butterflies often hold wings upright; moths rest with wings flat or tent-like.
- Activity – Butterflies are mostly day-active; moths are mostly night-active, though many fly by day.
- Body shape – Butterflies are usually slender and smooth; moths often thicker and furrier.
- Wing coupling – Many moths have a frenulum linking fore- and hindwings; butterflies lack this.
- Pupae – Butterfly pupae (chrysalides) are hard and smooth, without silk; many moths spin protective cocoons.
- Colouration – Butterflies are often bright, especially above; moths are usually camouflaged, though some day-flying species are colourful.

Butterflies and moths are all part of Lepidoptera. “Moth” refers to most species, while butterflies form a distinct branch. Together they make up one of the most diverse insect groups worldwide.

Host plants are the specific plants where butterflies lay their eggs and where caterpillars feed and grow (Figure 1). Some butterflies rely on a single host plant species, while others can use several. Without suitable host plants, butterflies cannot reproduce successfully, leading to population decline or even extinction.

Along the Great Ocean Road the known host plants for local butterfly species are listed here, though some species may also depend on additional plants that have not yet been identified.

Some butterflies form a special relationship with ants, known as myrmecophily. This is especially common in the Lycaenidae family (the Blues). In these interactions, ants protect and care for the caterpillars, while in return the caterpillars produce sugary secretions that the ants feed on. Just as butterflies rely on specific host plants, many myrmecophilous species also depend on particular ant species to complete their life cycle.



Figure 2: Simplified version of a butterfly life cycle

# FLIGHT TIME CALENDAR

Butterflies emerge and take flight during various periods throughout the year, with their activity influenced by weather conditions. It is expected that the timing and duration of flight periods will undergo alterations in response to changing climatic conditions and extreme weather events.





Butterflies perform unique courtship behaviours, which are intricate flight displays that occur in specific mating locations. These mating locations are often at a prominent landscape features such as coastal cliffs, tops of trees and peaks in the land. Courtship displays seen on the peaks of hills and mountain tops are called hill-topping. Coastal ecosystems, with their distinct plant species and favorable conditions, serve as important areas for these courtship performances. The displays involve aerial acrobatics and the emission of pheromones to attract potential mates.




At the right time of year, Striped Xenicas (pictured) can be spotted along the Great Ocean Walk conducting their unique mating behaviours.



# BUILDING A BUTTERFLY GARDEN

Butterflies are in decline due to a number of environmental challenges such as climate change and habitat loss. A way to contribute to their conservation is by establishing your butterfly-friendly garden. A butterfly garden provides a vital habitat for many native species, not just butterflies. In addition to planting local native host plants, you can also:

- Place rocks in sunny spots for butterflies to bask on in the warm sun.
- Put puddling areas within your garden. Can be a shallow dish with sand and water to provide water and essential minerals.
- Go organic, chemical fertilisers and pesticides are harmful to butterflies.
- Provide sheltered areas, butterflies are delicate and may need to shelter in wild weather.
- Planting local native flowers that bloom for long periods of the year make a great source of nectar.



Host plants



No chemicals

Basking rocks

Puddling area

Nectar flowers

- **Observe Quietly:** Don't worry about noise, butterflies can't hear, but it's still good to keep quiet. When you spot one flying, keep an eye on it until it lands.
- **Approach Smoothly:** Avoid quick movements, creep up smoothly to get close for a photograph. First get a photo from far away in case it disappears
- **Photograph:** Take clear photos from different angles. Wings open (down) and wings up where possible. Wings resting (up) is better for identification.
- **Identify:** Use your field guide to determine the species.
- **Record Details:** Note the location, date, and weather conditions (and if you see it laying eggs on a certain plant).
- **Share Findings:** Upload your observations to iNaturalist, where its identification will be confirmed by experts.



*Often you can get good enough photos for ID purposes using your smartphone camera.*

## iNaturalist

iNaturalist is a community-driven platform for recording and sharing biodiversity observations. Scan the QR code below to learn more.



# SWALLOWTAILS



The *Papilionidae* family, or **Swallowtails**, are a diverse and striking group of large, colourful butterflies. Swallowtails are recognised for their **distinctive tail-like extensions** on the hindwings that resemble a swallow's tail and are known for their strong and graceful flight. Typically, swallowtail butterflies are **large-sized** and have a wingspan ranging from 6 cm to 15 cm. The **caterpillars** of this family often have **unique defensive mechanisms**, such as mimicry and the presence of an osmeterium, a forked gland that emits foul-smelling chemicals to deter predators.

## *Chequered Swallowtail*

### *Papilio demoleus*

Wingspan: 72 - 75 mm.

#### Otway Host Plants

*Cullen* spp. (Scurf Peas)

*Citrus* spp.



## *Orchard Swallowtail*

### *Papilio aegaeus*

Wingspan:

120 - 140mm

Otway Host Plants

*Zieria* spp.



## *Dainty Swallowtail*

### *Papilio anactus*

Wingspan: 67 - 72mm

Otway Host Plants

*Citrus* spp.





The *Pieridae* family, or **Whites and Yellows**, have predominantly white, yellow, or orange wings often adorned with black markings. *Pieridae* butterflies are **typically medium-sized**, with wingspans ranging from 3 to 8 cm. They are known for their **fluttering flight** and common species of this group are seen in gardens and open fields.

## *Caper White*

### *Belenois java*

Wingspan: 55mm

Otway Host Plants

Doesn't breed in the Otways (migratory species)



## Spotted Jezebel

### *Delias aganippe*

Wingspan: 61-63mm

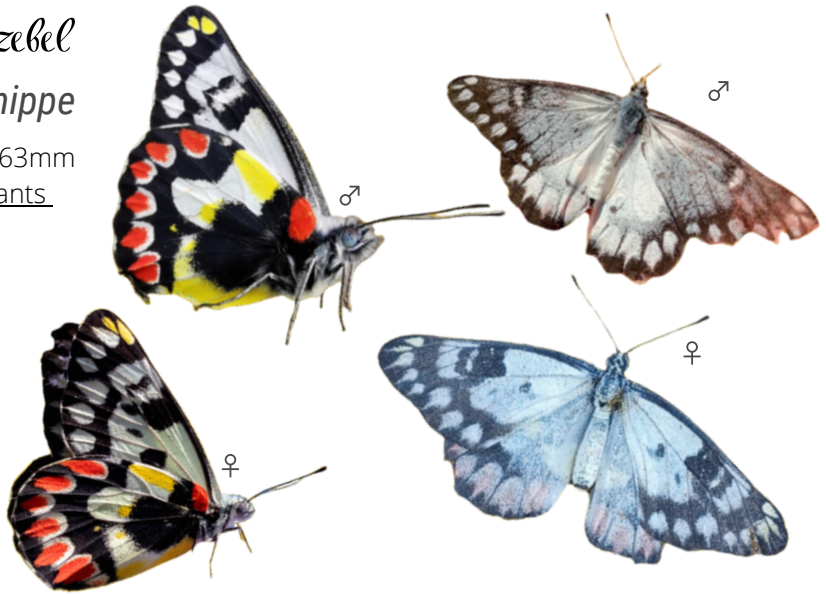
Otway Host Plants

*Exocarpos* spp.

(Ballarts)

*Amyema* spp.

(Mistletoes)



## Imperial Jezebel

### *Delias harpalyce*

Wingspan: 67-72mm

Otway Host Plants

*Amyema* spp.

(Mistletoes)

*Muellerina* spp.

(Mistletoes)



## *White Migrant* *Catopsilia pyranthe*

Wingspan: 53mm

Otway Host Plants

*Senna* spp.



Introduced species

## *Cabbage White* *Pieris rapae*

Wingspan: 44mm

Otway Host Plants

*Brassicaceae* (Mostly introduced weeds)



## *Small Grass Yellow*

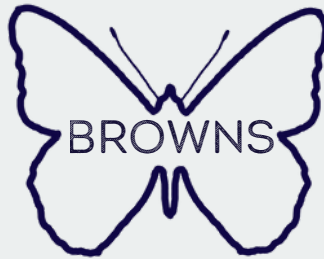
*Eurema smilax*

Wingspan: 30-33mm

Otway Host Plants

Doesn't breed in the Otways (migratory species)





The *Nymphalidae* family, commonly known as brush-footed butterflies or **Browns**, is the largest butterfly family, boasting over 6,000 species worldwide. Browns have reduced forelegs, which are covered in fine hairs and **give the appearance of having only four legs**. They are highly diverse in size, colour, and habitat, with wingspans ranging from 4 to 15 cm. They exhibit a wide range of vibrant patterns and colours, often featuring **striking eyespots and bold markings**.

## *Lesser Wanderer*

### *Danaus petilia*

Wingspan: 60mm

Otway Hostplants

Doesn't breed in the Otways (migratory species)





## Monarch

Introduced species

### *Danaus plexippus*

Wingspan: 92-93mm

Otway Host Plants

*Gomphocarpus* spp.

(an introduced weed)



## Glasswing

### *Acraea andromacha*

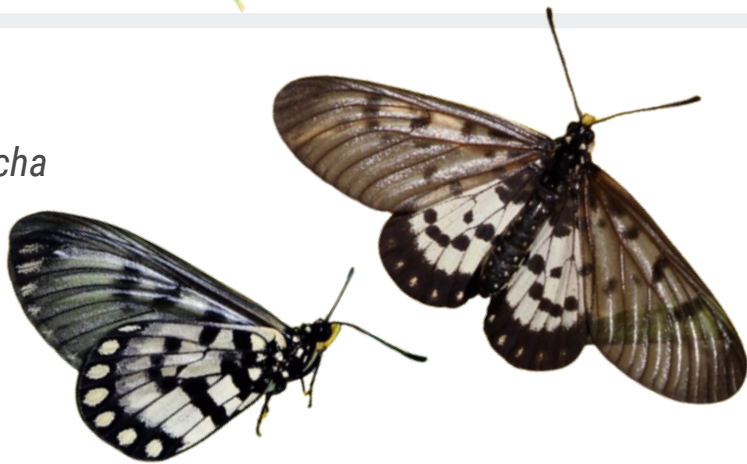
Wingspan: 53-56mm

Otway Host Plants

Doesn't breed in the

Otways (migratory

species)



## Tailed Emperor

### *Charaxes sempronius*

Wingspan: 75-85mm

Otway Host Plants

*Fabaceae* (Peas)

*Lythraceae* (lythrums)

*Oleaceae* (Olives)



## *Common Eggfly* *Hypolimnasia bolina*

Wingspan: 76-86mm

Otway Host Plants

Doesn't breed in the  
Otways (migratory  
species)



## *Meadow Argus* *Junonia villida*

Wingspan: 40-43 mm

Otway Host Plants

*Goodenia* spp.

*Plantago* spp.

(Plantains)

*Scaevola* spp. (Fan  
flowers)





## Australian Painted Lady

### *Vanessa kershawi*

Wingspan: 43-47 mm

Otway Host Plants

*Asteraceae* especially *Chrysocephalum* and *Helichrysum* (everlasting daisies) and introduced species such as Cape Weed and Lavendar.



## Yellow Admiral

### *Vanessa itea*

Wingspan: 50 mm

Otway Host Plants

*Urtica spp.* (native and introduced Nettles)  
*Soleirolia soleirolii*  
(Baby's Tears)



## Sword Grass-brown

### *Tisiphone abeona*

Wingspan: 52-59 mm

Otway Host Plants

*Gahnia spp.* (Saw-sedges)



## Silver Xenica

### *Oreixenica lathoniella*

Wingspan: 29 mm

Otway Host Plants

*Microlaena stipoides*

(Weeping-Grass)

*Poa* spp. (Tussock Grasses)

*Tetrarrhena* spp. (Wire-Grasses)



## Striped Xenica

### *Oreixenica kershawi*

Wingspan: 33-34 mm

Otway Host Plants

*Poa* spp. (Tussock

Grasses)

*Tetrarrhena* spp. (Wire-

Grasses)



## Marbled Xenica

### *Geitoneura klugii*

Wingspan: 39-42 mm

Otway Host Plants

*Austrostipa* spp (Spear Grasses)

*Poa* spp. (Tussock Grasses)

*Rytidosperma* spp. (Wallaby Grasses)

*Themeda triandra* (Kangaroo Grass)



## Forest Brown

### *Argynnis cyrila*

Wingspan: 35 mm

Otway Host Plants

*Tetrarrhena* spp. (Wire Grasses)

*Microlaena stipoides*  
(Weeping-Grass)



## Common Brown

### *Heteronympha merope*

Wingspan: 56-64 mm

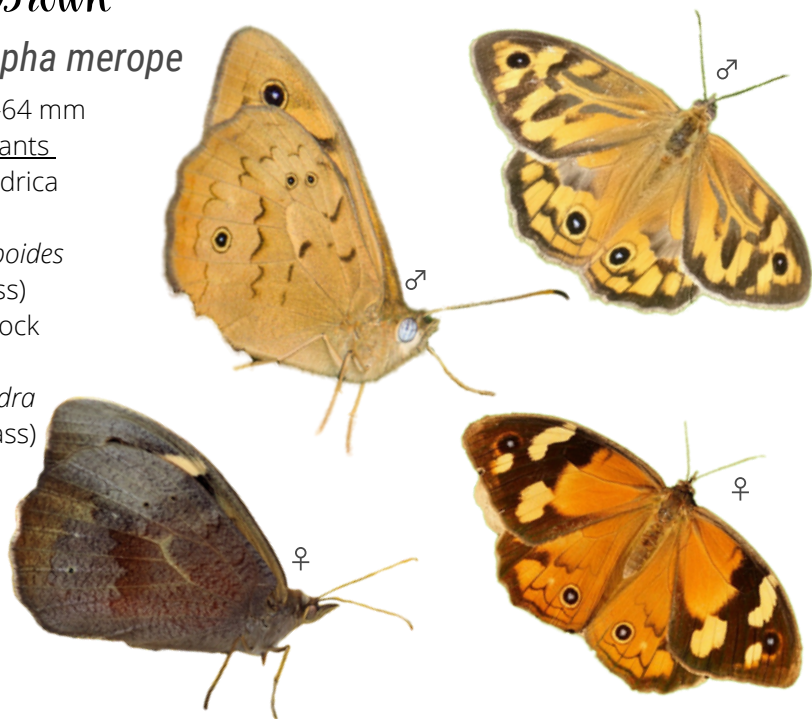
Otway Host Plants

*Imperata cylindrica*  
(Blady Grass)

*Microlaena stipoides*  
(Weeping-Grass)

*Poa* spp. (Tussock Grasses)

*Themeda triandra*  
(Kangaroo Grass)



## Shouldered Brown

### *Heteronympha penelope*

Wingspan: 54-56 mm

Otway Host Plants

*Poa* spp. (Tussock Grasses)

*Rytidosperma* spp. (Wallaby Grasses)

*Themeda triandra* (Kangaroo Grass)



## Spotted Brown

### *Heteronympha paradelpha*

Wingspan: 43-46mm

Otway Host Plants

*Microlaena stipoides*

(Weeping Grass)

*Poa* spp. (Tussock Grasses)



## Solander's Brown

### *Heteronympha solandri*

Wingspan: 50-70 mm.

Otway Host Plants

*Poa* spp. (Tussock Grasses)

*Tetrarrhena* spp. (Wire Grasses)





The *Hesperiidae* family, commonly known as **skippers**, have **robust and stout bodies**, relatively small wings, and a **rapid, darting flight pattern**.

Skippers typically have wingspans ranging from 2 to 5 cm and are often **brown, grey, or orange**, sometimes with white or yellow markings.

One of the defining features of skippers is their **hooked antennae** and their caterpillars are known to fold leaves or construct shelters by binding them with silk, where they rest during the day. The caterpillars also primarily feed at night, reducing the risk of predation, and favour grasses or sedges as host plants.

### *Barred Skipper*

#### *Dispar compacta*

Wingspan: 20-40 mm.

Otway Host Plants

*Microlaena stipoides*

(Weeping-Grass)

*Poa spp.* (Tussock  
Grasses)



## Orange Ochre

### *Trapezites eliena*

Wingspan: 33-37 mm.

Otway Host Plants

*Lomandra* spp. (Mat-Rushes)



## Splendid Ochre

### *Trapezites symmomus*

Wingspan: 40-45 mm.

Otway Host Plants

*Lomandra longifolia*  
(spiny-headed mat-rush)



## Green-Grass Dart

### *Ocybadistes walkeri*

Wingspan: 20 mm.

Otway Host Plants

*Dianella* sp (Flax Lilies)  
*Imperata cylindrica* (Blady Grass)  
*Themeda triandra* (Kangaroo Grass)



## *Two-spotted-Grass Skipper*

### *Pasma tasmanica*

Wingspan: 20-30 mm.

Otway Host Plants

*Microlaena stipoides*

(Weeping-Grass)

*Poa* spp. (Tussock Grasses)



## *Bright Shield Skipper*

### *Timoconia flammeata*

Wingspan: 30 mm.

Otway Host Plants

*Poa tenera* (Slender

Tussock-Grass)

*Tetrarrhena* spp. (Wire

Grasses)



## *Montane Sedge Skipper*

### *Oreisplanus perornatus*

Wingspan: 30-35 mm.

Otway Host Plants

*Gahnia sieberiana* (Red-

Fruit Saw-Sedge)



## Golden-haired Sedge Skipper

*Hesperilla chrysotricha*

Wingspan: 30-35 mm.

Otway Host Plants

*Gahnia* spp. (Saw-Sedges)

Needs to be in full sun



## Flame Sedge Skipper

*Hesperilla idothea*

Wingspan: 35-40mm.

Otway Host Plants

*Gahnia* spp. (Saw-Sedges)

Needs to be in shade



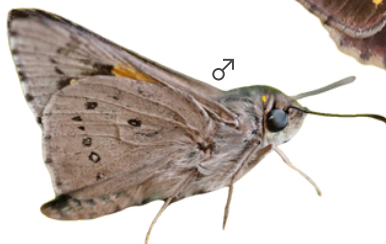
## Varied Sedge Skipper

*Hesperilla donnysa*

Wingspan: 30-35 mm.

Otway Host Plants

*Gahnia* spp. (Saw-Sedges)



## Yellow Sedge Skipper

### *Hesperilla flavescens*

Wingspan: 30-35mm.

Otway Host Plants

*Gahnia filum* (Chaffy Saw-Sedge)



## Heath Sand Skipper

### *Antipodia chaostola*

Wingspan: 30-35 mm.

Otway Host Plants

*Gahnia* spp. (Saw-Sedges)



## White-banded Grass Dart

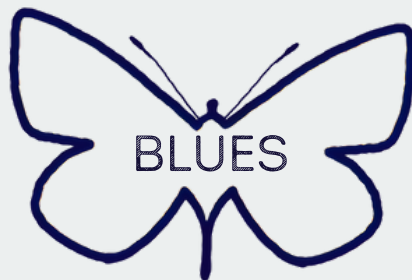
### *Taractrocera papyria*

Wingspan: 20mm.

Otway Host Plants

*Austrostipa* spp. (Spear Grasses),  
*Echinopogon* spp. (Hedgehog Grasses),  
*Phragmites australis* (Common Reed),  
*Microlaena stipoides* (Weeping Grass), *Poa*  
 spp. (Tussock Grasses), *Rytidosperma* spp  
 (Wallaby Grasses)





The *Lycaenidae* family, commonly known as **blues** or gossamer-winged butterflies are generally small, with wingspans ranging from 1.3 to 5 cm. They have **slender, elongated bodies** with delicate, brightly coloured wings, often with **iridescent** blues, fiery coppers, and vivid hues of orange, red, and purple.

Blue butterflies can be identified by their **unique resting wing patterns**, which may be difficult to tell apart between some species without a good photograph.

Many species exhibit **mutualistic relationships with ants**, with the larvae secreting substances that attract and appease the ants, which in turn offer protection.

## Dark Purple Azure

### *Ogyris abrota*

Wingspan: 40 mm.

Otway Host Plants

*Amyema* spp. (Mistletoes)

*Muellerina* spp. (Mistletoes)



## Fiery Jewel

### *Hypochoeris ignitus*

Wingspan: 25 mm.

Otway Host Plants

*Acacia* spp., (Wattles)

*Banksia* spp., *Exocarpos*

spp., (Ballarts) *Grevillea*

spp., *Pomaderris* spp.



## Broad-margined Azure

### *Ogyris olane*

Wingspan: 35mm.

Otway Host Plants

*Amyema* spp. (Mistletoes)



## Long-tailed Pea Blue

### *Lampides boeticus*

Wingspan: 25 mm.

Otway Host Plants

*Fabaceae* (Legumes, the caterpillars eat buds, flowers, and seeds inside immature pods.)



## *Copper Pencilled Blue*

*Cyprotides cyprotus*

Wingspan: 25-30 mm.

Otway Host Plants

*Grevillea* spp.

*Hakea* spp.



## *Common Dusky Blue*

*Erina hyacinthina*

Wingspan: 30 mm.

Otway Host Plants

*Cassytha* spp. (Dodder-

Laurels)



## *Blotched Dusky Blue*

*Erina acasta*

Wingspan: 20 mm.

Otway Host Plants

*Cassytha* spp. (Dodder-

Laurels)



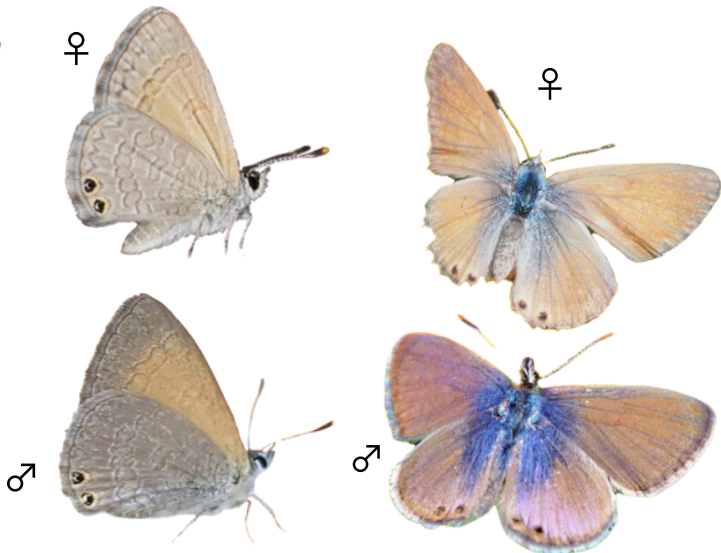
## *Twin-spotted Lineblue*

*Nacaduba biocellata* ♀

Wingspan: 15 mm.

Otway Host Plants

*Acacia* spp. (Wattles)



## *Saltbush Blue*

*Theclinesthes serpentatus*

Wingspan: 20 mm.

Otway Host Plants

*Chenopodioideae*

(Saltbushes)



## Common-Grass Blue

### *Zizina otis*

Wingspan: 15 mm.

Otway Host Plants

*Fabaceae* (Legumes)



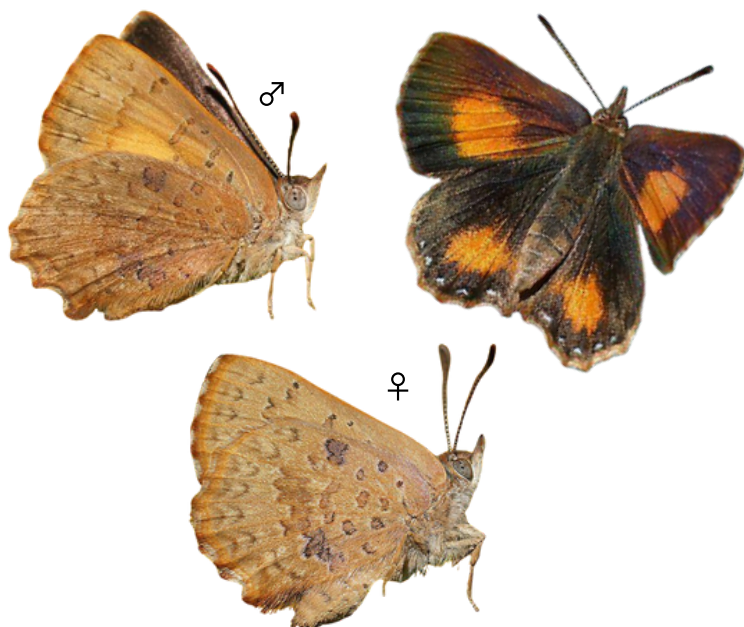
## Bright Copper

### *Paralucia aurifera*

Wingspan: 25mm.

Otway Host Plants

*Bursaria spinosa* (Sweet  
Bursaria)



Wings:

Species	Restings (R)		Image Credit
	Male (♂)	Female (♀)	
<i>Acraea andromacha</i>	♂	R	Glenda Walter
<i>Acraea andromacha</i>	♀	O	Richard Fuller
<i>Antipodia chaostola</i>	♀	R	Safia Maher
<i>Antipodia chaostola</i>	♂	O	Barry Lingham
<i>Argynnia cyrila</i>	♀	R	Reiner Richter
<i>Argynnia cyrila</i>	♀	O	Reiner Richter
<i>Belenois java</i>	♀	R	Thomas Nataprawira
<i>Belenois java</i>	♀	O	John Walter
<i>Belenois java</i>	♂	R	Reiner Richter
<i>Belenois java</i>	♂	O	Roger Standen
<i>Catopsilia pyranthe</i>	♀	R	Steven Dew
<i>Catopsilia pyranthe</i>	♀	O	Ryan Shofner
<i>Charaxes sempronius</i>	♀	R	Greg Tasney
<i>Charaxes sempronius</i>	♂	O	Huw Johnson
<i>Cyprotides cyprotus</i>	♀	O	John Newman
<i>Cyprotides cyprotus</i>	♀	R	John Newman
<i>Danaus petilia</i>	♀	R	Adam Fry
<i>Danaus petilia</i>	♀	O	Ellura Sanctuary
<i>Danaus plexippus</i>	♂	R	Vireya Jacquard
<i>Danaus plexippus</i>	♂	O	Samuel Graham-Exelby
<i>Delias aganippe</i>	♀	O	Pete Crowcroft
<i>Delias aganippe</i>	♂	O	Barbara Russell
<i>Delias aganippe</i>	♀	R	Karen Retra
<i>Delias aganippe</i>	♂	R	Matthew Johnson
<i>Delias harpalyce</i>	♂	R	Kate Holzapfel
<i>Delias harpalyce</i>	♂	O	Ewin Williams
<i>Delias harpalyce</i>	♀	R	Rachel Brothwood
<i>Delias harpalyce</i>	♀	O	Karen Bennetts
<i>Dispar compacta</i>	♂	O	Michael Keogh
<i>Dispar compacta</i>	♂	R	Andrew Pavlov
<i>Erina acasta</i>	♂	O	Martin Butterfield
<i>Erina acasta</i>	♂	R	Liz Snow
<i>Erina hyacinthinus</i>	♀	R	John Eichler
<i>Erina hyacinthinus</i>	♀	O	Michael Keogh
<i>Eurema smilax</i>	♀	R	Frank Pirece
<i>Eurema smilax</i>	♂	O	Julie Ritchie
<i>Geitoneura klugii</i>	♀	O	Neil Cheshire
<i>Geitoneura klugii</i>	♀	R	Tobias Westmeier
<i>Hesperilla chrystricha</i>	♀	O	Francesco Martoni
<i>Hesperilla chrystricha</i>	♂	R	Margaret Warren
<i>Hesperilla donnysa</i>	♀	O	Neil Cheshire
<i>Hesperilla donnysa</i>	♂	R	Wesley Jenkinson
<i>Hesperilla flavescens</i>	♂	O	Gareth Pellas
<i>Hesperilla flavescens</i>	♂/♀		
<i>Hesperilla flavescens</i>	♂/♀		
<i>Hesperilla idothea</i>	♀	O	Mark Colin Breyley
<i>Hesperilla idothea</i>	♂	R	Reiner Richter
<i>Hesperilla idothea</i>	♂/♀		Reiner Richter
<i>Heteronympha merope</i>	♂	O	Gareth Pellas
<i>Heteronympha merope</i>	♂	R	William Domenge
<i>Heteronympha merope</i>	♀	R	Steve Law
<i>Heteronympha merope</i>	♀	O	Reiner Richter
<i>Heteronympha paradelpha</i>	♂	O	Michael Keogh
<i>Heteronympha paradelpha</i>	♀	O	Kerri-Lee Harris
<i>Heteronympha paradelpha</i>	♂	R	John Eichler
<i>Heteronympha penelope</i>	♀	R	Reiner Richter
<i>Heteronympha penelope</i>	♀	O	Rod Lowther
<i>Heteronympha solandri</i>	♀	O	Michael Keogh
<i>Heteronympha solandri</i>	♀	R	Reiner Richter
<i>Hypochrysops ignitus</i>	♂/♀	R	Reiner Richter
<i>Hypochrysops ignitus</i>	♂/♀	O	Reiner Richter

Wings:

Species	Restings (R)		Image Credit
	Male (♂)	Female (♀)	
<i>Hypolimnys bolina</i>	♂	O	Wingspanner
<i>Hypolimnys bolina</i>	♀	R	Kai Squires
<i>Hypolimnys bolina</i>	♀	O	Nico Martinez Lopez
<i>Hypolimnys bolina</i>	♂	R	Braeda Wechsel
<i>Junonia villida</i>	♀	R	Mike Mullis
<i>Junonia villida</i>	♂	O	Ian Moodie
<i>Lampides boeticus</i>	♀	R	Nicole Andrews.
<i>Lampides boeticus</i>	♂	O	Adam Gor
<i>Nacaduba biocellata</i>	♀	R	Pamela Donaldson
<i>Nacaduba biocellata</i>	♂	O	Jacques LAMY
<i>Nacaduba biocellata</i>	♀	O	Carol Page
<i>Nacaduba biocellata</i>	♂	R	Dion Maple
<i>Ocybadistes walkeri</i>	♂	O	Adam Edmonds
<i>Ocybadistes walkeri</i>	♂	R	Kery
<i>Ogyris olane</i>	♂/♀	R	Kirsten Boehm
<i>Ogyris abrota</i>	♀	R	John Eichler
<i>Ogyris abrota</i>	♀	O	
<i>Ogyris abrota</i>	♂	R	Rance Cheung
<i>Ogyris abrota</i>	♂	O	Lilian Kirby
<i>Ogyris olane</i>	♂/♀	R	Kirsten Boehm
<i>Ogyris olane</i>	♂/♀	O	
<i>Oreisplanus perornatus</i>	♂/♀	O	
<i>Oreisplanus perornatus</i>	♂/♀	R	
<i>Oreixenica kershawi</i>	♀	R	Reiner Richter
<i>Oreixenica kershawi</i>	♀	O	Reiner Richter
<i>Oreixenica lathoniella</i>	♀	R	Russell Best
<i>Oreixenica lathoniella</i>	♀	O	Sean Patrick
<i>Papilio aegaeus</i>	♂	O	Reiner Richter
<i>Papilio aegaeus</i>	♀	R	Diana Davey
<i>Papilio aegaeus</i>	♂	O	Guillaume Thomas Doerig
<i>Papilio aegaeus</i>	♂	R	Yi-Kai Tea
<i>Papilio anactus</i>	♂/♀	R	Arex Li
<i>Papilio anactus</i>	♂/♀	O	Reiner Richter
<i>Papilio demoleus</i>	♂/♀	R	Lynda Wilson
<i>Paralucia aurifer</i>	♂	O	John Eichler
<i>Paralucia aurifera</i>	♀	R	Paul Neumann
<i>Paralucia aurifera</i>	♂, ♀	R, O	Reiner Richter
<i>Pasma tasmanica</i>	♂	O	Deb Oliver
<i>Pasma tasmanica</i>	♀	R	Reiner Richter
<i>Pieris rapae</i>	♂	O	Sean Patrick
<i>Pieris rapae</i>	♀	R	David McCorquodale
<i>Taractrocer a papyria</i>	♂/♀	R	Allan Hahn
<i>Taractrocer a papyria</i>	♂/♀	O	Michael Keogh
<i>Theclinesthes serpentatus</i>	♀	R	Daniel Meier
<i>Theclinesthes serpentatus</i>	♀	O	Sally Dobbie
<i>Timoconia flammeata</i>	♂	O	Ron I. Greer
<i>Timoconia flammeata</i>	♂	R	Gen Conway
<i>Tisiphone abeona</i>	♀	O	Gareth Pellas
<i>Tisiphone abeona</i>	♀	R	Sean Patrick
<i>Trapezites eliena</i>	♂/♀	R	Doug Smith
<i>Trapezites eliena</i>	♂/♀	O	Reiner Richter
<i>Trapezites symmumus</i>	♀	O	Graeme L Rigg
<i>Trapezites symmumus</i>	♂	R	David Akers
<i>Vanessa itea</i>	♀	O	Lewis Hiller
<i>Vanessa itea</i>	♀	R	Reiner Richter
<i>Vanessa kershawi</i>	♂	O	Reiner Richter
<i>Vanessa kershawi</i>	♀	O	Ellura Sanctuary
<i>Zizina otis</i>	♂/♀	R	Deidre Houlden
<i>Zizina otis</i>	♂	O	Reiner Richter
<i>Zizina otis</i>	♀	O	Heath Hunter

Explore the butterfly species of the Great Ocean Road with this localised field guide. Observing butterflies is a perfect way to connect with nature and contribute to important data collection for conservation.

